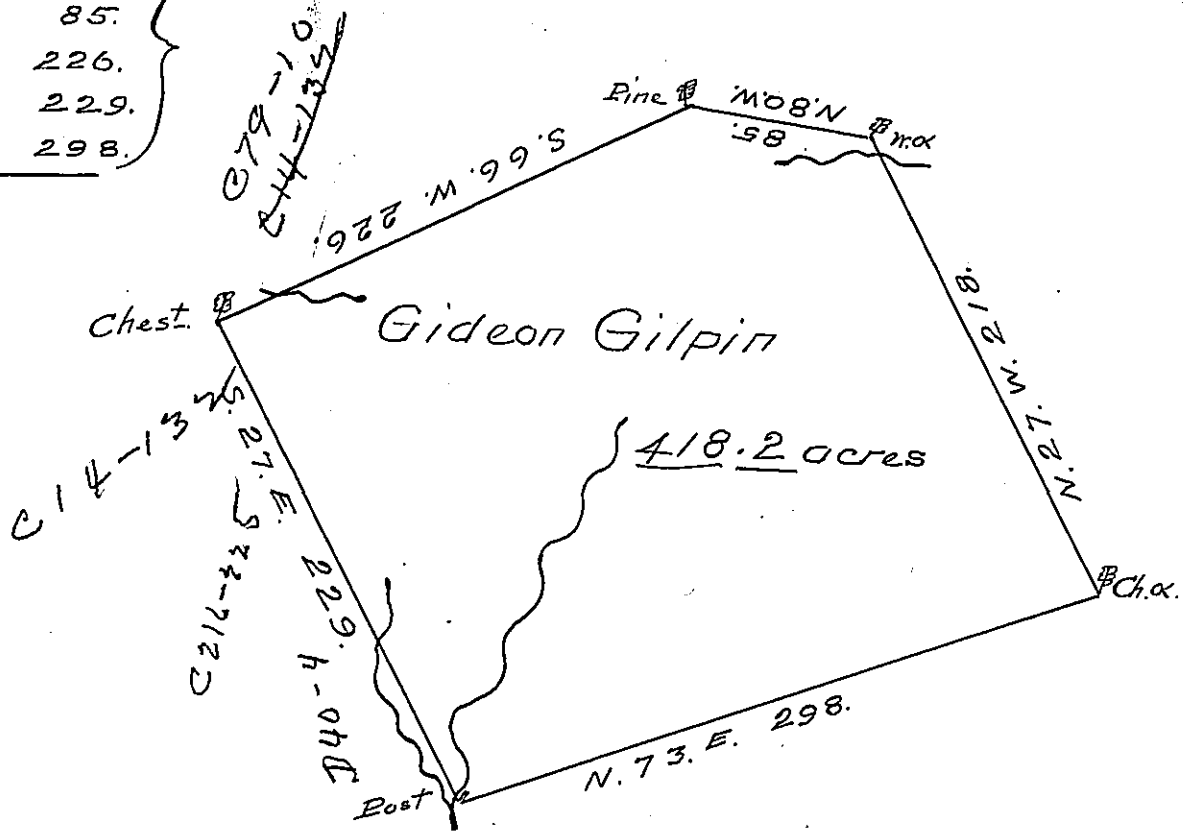


Courses & Dist.

- N. 27. W. 218.
- N. 80 W. 85.
- S. 66. W. 226.
- S. 27. E. 229.
- N 73 E. 298.



The Draught of a tract of land situate in Greenwood Township Cumberland County containing four hundred & eighteen acres & <sup>34 Ps.</sup> ~~two tenths~~ of an acre of the usual allowance of six Per Cent for roads &c. surveyed for Gideon Gilpin May the 6<sup>th</sup> 1785 in pursuance of a warrant from the Honorable the Vice President of the Supreme Executive Council Dated January the 5<sup>th</sup> 1785.

John Lukens Esq<sup>r</sup>  
SURVE. GEN<sup>l</sup>

Ja<sup>s</sup>. Harris D.S.

IN TESTIMONY that the above is a copy of the original remaining on file in the Department of Internal Affairs of Pennsylvania, made conformably to an Act of Assembly approved the 16th day of February, 1833, I have hereunto set my Hand and caused the Seal of said Department to be affixed at Harrisburg, this twenty fifth day of October 1904.

*Loae R. Brown*  
Secretary of Internal Affairs.